

Cabinet U-handles

Steel / Stainless Steel, without thread, for welding

SPECIFICATION

Version in Steel

Steel **ST**
matte, shot-blasted

Version in Stainless Steel

Stainless Steel AISI 304 **NI**
matte, shot-blasted

INFORMATION

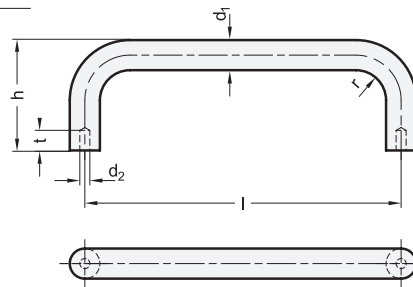
Cabinet U-handles GN 425.3 are made of bent steel sections and are affixed by welding.

The holes d_2 serve, if necessary, for inserting dowel pins or guide pins that provide a simple method for positioning and fixing the cabinet U-handle in place via the alignment holes in the opposing part for the welding process.

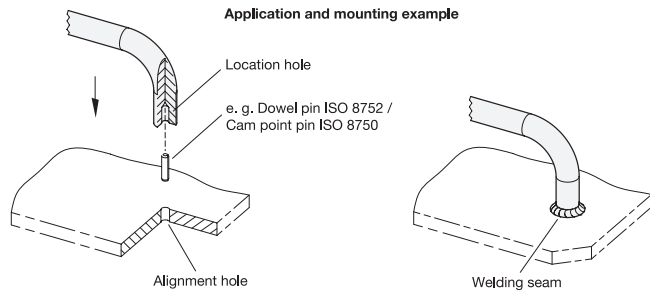
Due to the manufacturing process, **special designs** can be supplied even in relatively small quantities

TECHNICAL INFORMATION

- ISO-Fundamentall tolerances (see page A21)
- Stainless Steel characteristics (see page A26)



Application and mounting example



* Complete with material of the Cabinet U-handles (ST or NI)

ST Steel
NI Stainless Steel

GN 425.3

Description	d	l ±0.5	d2 H12	h	r	t	⚖
GN 425.3-8-64-*	8	64	3	35	10	5	45
GN 425.3-8-88-*	8	88	3	35	10	5	55
GN 425.3-8-100-*	8	100	3	35	10	5	59
GN 425.3-10-100-*	10	100	3	43	12	5	113
GN 425.3-10-125-*	10	125	3	43	12	5	117
GN 425.3-10-160-*	10	160	3	43	12	5	138
GN 425.3-12-125-*	12	125	4	51	14	6	170
GN 425.3-12-160-*	12	160	4	51	14	6	210
GN 425.3-12-200-*	12	200	4	51	14	6	245
GN 425.3-16-125-*	16	125	4	59	18	6	321
GN 425.3-16-160-*	16	160	4	59	18	6	377
GN 425.3-16-200-*	16	200	4	59	18	6	440
GN 425.3-20-200-*	20	200	5	68	22	8	707
GN 425.3-20-250-*	20	250	5	68	22	8	831

Weight material ST